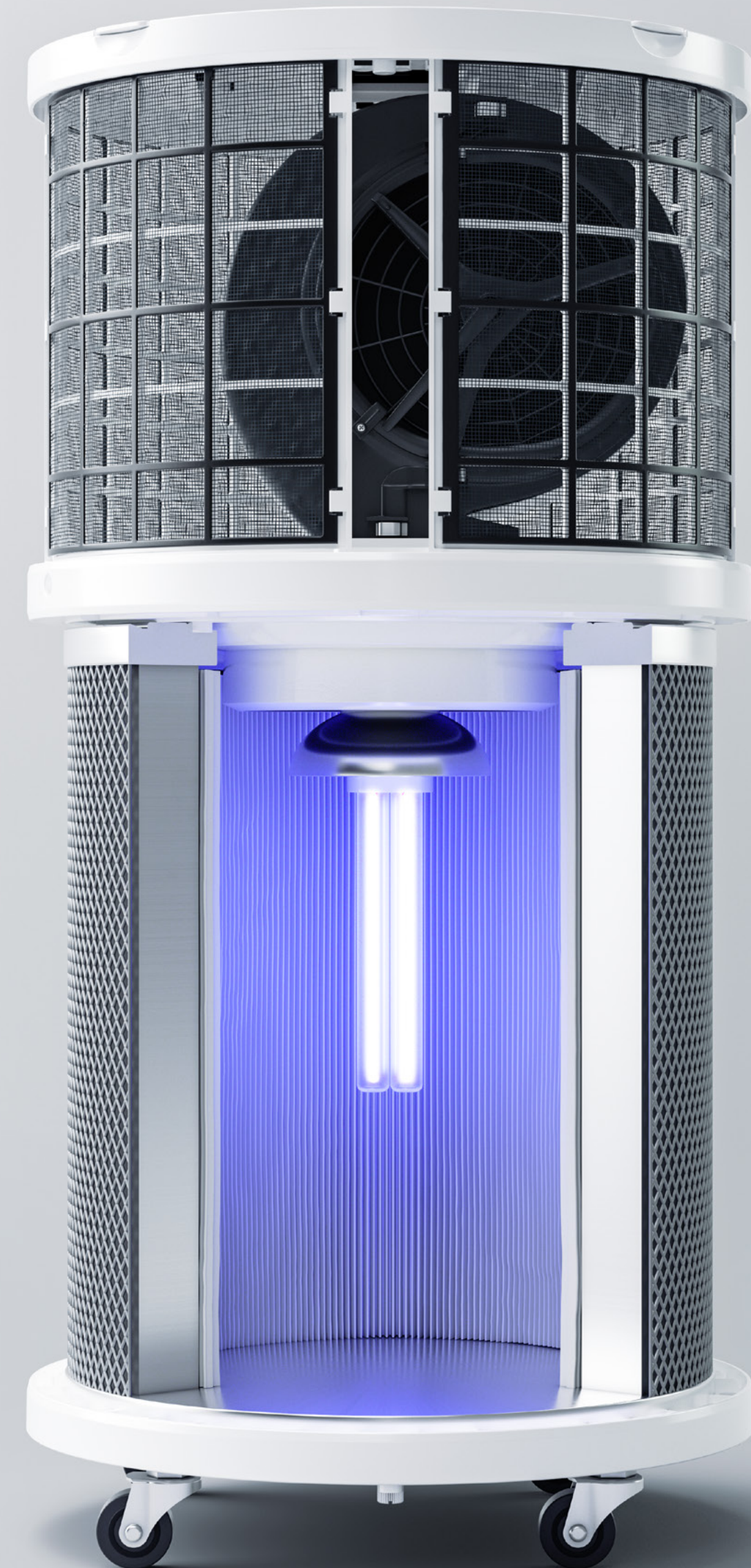


RENSAIR

— SPECIFICATION GUIDE

Rensair Q01B

rensair.com



— OVERVIEW



CONTROL PANEL

Three airflow settings with timer functionality
Auto mode where the internal particle counter automatically adjusts airflow settings based on surrounding air quality

AIR INLET PERFORATIONS

AIR OUTLET PERFORATIONS

ELECTRICAL PLUG

Suitable for respective country

REMOTE CONTROL

Uses AAA batteries

WHEELS FOR PORTABILITY

RENSAIR

rensair.com

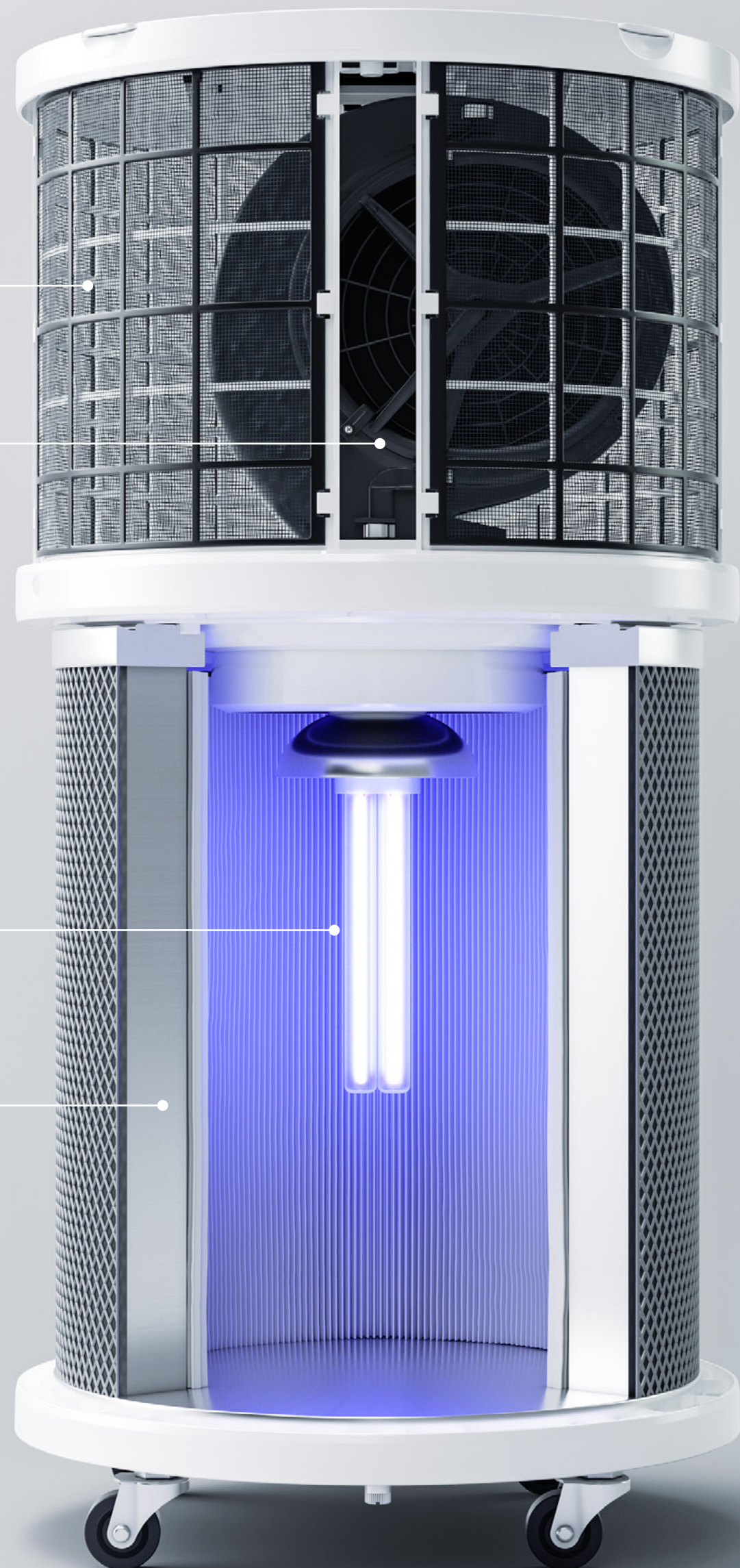
— HOW IT WORKS

PRE-FILTER

FAN

UVC LAMP

HEPA 13 FILTER



RENSAIR

The Rensair air purifier sucks in surrounding air through the upper air inlet perforations. Air travels through the removable pre-filters placed at the top of the machine which catch and trap larger airborne particles and dust.

A powerful fan pushes the pre-filtered air down into the cylindrical shaped HEPA 13 filter located in the middle of the unit.

As air hits the HEPA 13 filter, bacteria, viruses and smaller airborne particles and pollutants become trapped on its inner surface.

An 18W UVC lamp placed in the centre of the cylindrical drum continuously illuminates the entire filtration area. This UVC light breaks down the DNA and RNA of all pathogens thereby destroying them. The continuous disinfection process ensures that the Rensair air purifier is always safe to operate and maintain.

Large volumes of clean air travels out of the unit via the lower perforations. The cylindrical shape of the Rensair air purifier allows air to flow out in every direction thereby making it suitable for almost all locations.

[rensair.com](https://www.rensair.com)

SPECIFICATIONS

Dimensions: H:77cm / 30.3in, Ø37cm / 14.5in

Dimensions in box: H: 84cm / 33in x W: 43cm / 16.9 in x D: 43cm / 16.9in

Net weight: 18kg / 40lbs

Gross Weight (including box): 21kg / 46lbs

Colour: White

HEPA filter: EU13 (EN 1822 class H13)

ELECTRICAL SPECIFICATIONS

CE Certified (UK & EU): 220-240V, ~50Hz, IEC C14 to C13 connector to allow for different power plugs

ETL Certified (US & Canada): 110-120V, ~60Hz, US type B power plug

Length of power cord: 3m / 9.8ft

UVC lamp: 18W, 254nm light

PERFORMANCE

RENSAIR AIRFLOW VOLUME	CUBIC METERS M ³ /HOUR	CUBIC FEET FT ³ /HOUR	NOISE LEVEL	POWER USAGE
Low setting	300	10,600	45dBA	160W
Medium setting	430	15,200	52dBA	180W
High setting	560	19,800	59dBA	220W

Tolerance +/- 10%

MAINTENANCE

Pre-filters should not be changed, but we recommend cleaning from time to time, depending on dust and dirt in your space. Simply 'click' to open and lift the pre-filter up to vacuum them, or wipe them with a dry cloth

HEPA13 filter and UVC lamp change is required every 9000 operational hours (~1 year). The display will automatically tell you when to do so

TESTED BY INDEPENDENT LABORATORIES

Eurofins

NorConsult

University Hospital Oslo

OTHER

Instruction Manual

Maintenance Instructions

For additional information
please visit rensair.com or
email contact@rensair.com