

RENSAIR

— SPECIFICATION GUIDE

Rensair Q08A

Portable air purifier with WiFi connectivity

rensair.com



— Q08A

The Rensair Q08A portable, hospital-grade air purifier is a compact, flexible unit that is highly effective in removing airborne particulate matter, including pathogens (viruses and bacteria), pollen, dust and mould, in small indoor spaces.

Leveraging Rensair's proven HEPA, UVC and centrifugal airflow technologies, the unit is capable of cleaning up to 400m³ of air per hour on the maximum setting.

The Q08A has five airflow speeds, offering more flexibility for users, and is exceptionally quiet relative to the air delivery rate. On the lowest fan setting it cleans 90m³ of air per hour at an almost inaudible level of 32dBA.

The device is equipped with a touch screen interface and WiFi connectivity, allowing remote operation and smart usage. This serves to amplify clean air during and immediately after periods of high occupancy, while conserving energy during sustained periods of absence.

The net weight is just 10kg, enabling the unit to be easily carried by the handle.



RENSAIR

rensair.com

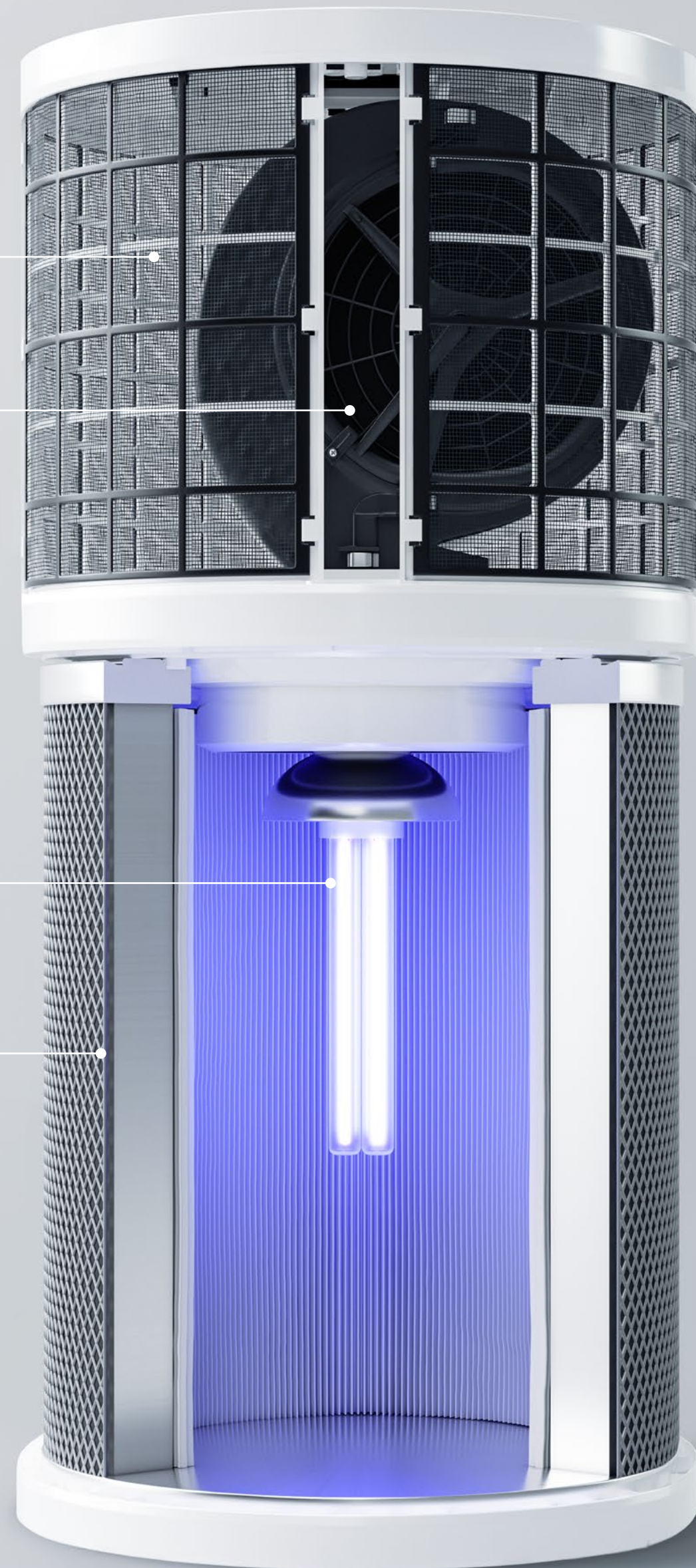
– HOW IT WORKS

PRE-FILTER

FAN

UVC LAMP

HEPA 13 FILTER



RENSAIR

Unique, patented combination of HEPA and UVC

- Air enters the top of the unit and passes through a pre-filter system. The pre-filters trap large particles, preventing them from reaching the HEPA filter and thereby ensuring a long and efficient filter life. The pre-filters are easily accessible for regular vacuuming.
- A powerful fan pushes the air down uniformly into the cylinder-shaped H13 HEPA filter below. The robust centrifugal fan creates much higher static air pressure than the axial fans commonly used in other air purifiers. By pushing air out through the filter – rather than sucking it through – the unit achieves far higher air volumes and consumes less energy.
- 99.97% of viruses, bacteria and other airborne micro-organisms are trapped as they hit the pleated surface of the H13 HEPA filter. The continued air flow keeps the micro-organisms stuck on the filter surface.
- A 18W UVC lamp is suspended in the centre of the cylinder, permanently illuminating the entire HEPA filter surface. This ensures continuous and complete disinfection of the surface of the filter, destroying the DNA and RNA in any pathogens and ensuring the safe operation and maintenance of the unit.

rensair.com

— Q08A

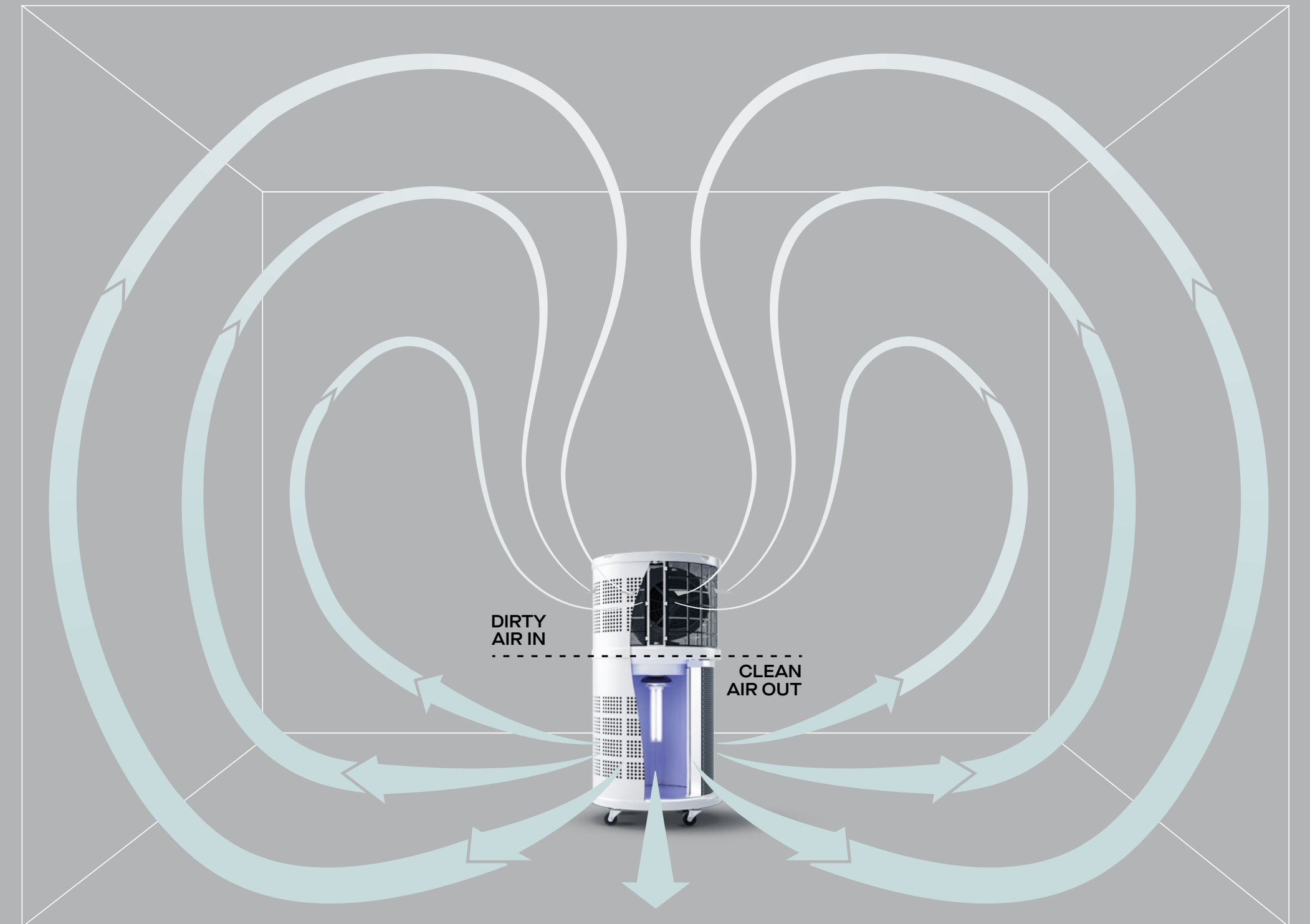
360° Airflow

The Q08A air purifier takes in dirty air from above and around the circumference of the unit, sucking in at 360 degrees regardless of the angle of the unit.

Outflowing clean air is distributed evenly, with no exhale draft. The unit quickly spreads purified air at 360 degrees in a uniform, outward 'radial jet' motion parallel with the floor. This enhances room penetration and encourages toroidal circulation of airflow throughout the space, such that clean air bounces off the walls, then the ceiling and then back into the entire room.

Importantly, the toroidal flow pressures particles and aerosols downwards, away from the point of inhalation.

RENSAIR



SPECIFICATIONS

Dimensions: H:65cm / 25.6in, Ø30cm / 11.8in

Dimensions in box: H: 72.5cm / 28.5in D: 37cm / 14.6in x W: 37cm / 14.6in

Net weight: 9.5kg / 21lbs

Gross Weight (including box): 11.3kg / 25lbs

Colour: White

HEPA filter: EU13 (EN 1822 class H13)

PERFORMANCE

RENSAIR AIRFLOW VOLUME	CUBIC METRES M ³ /HOUR	CUBIC FEET FT ³ /MINUTE	NOISE LEVEL (dBA)	POWER USAGE (W)
Quiet setting	100	60	32	45
Low setting	210	125	45	110
Medium setting	240	140	49	120
High setting	280	170	54	130
Turbo setting	400	240	62	160

Tolerance +/- 10%

ELECTRICAL SPECIFICATIONS

CE Certified (UK & EU): 220-240V, ~50Hz, IEC C14 to C13 connector to allow for different power plugs

ETL Certified (US & Canada): 110-120V, ~60Hz, US type B power plug

Length of power cord: 3m / 9.8ft

UVC germicidal lamp: 18W, 254nm light

Sensors: PM2.5 sensor measuring µg/m³

Connectivity: WiFi connectivity and controls via the "Tuya Smart" App

MAINTENANCE

The pre-filters need to be cleaned from time to time depending on dust accumulation on the sturdy mesh. Simply push down to release and lift out the pre-filters in order to vacuum clean them.

The HEPA 13 filter and UVC lamp need to be replaced every 5,000 operational hours (~12 months) in a simple safe and straightforward operation. The unit's display notifies when this is required.

TECHNOLOGY TESTED BY INDEPENDENT LABORATORIES

Click <https://bit.ly/39h2SGa> or scan the QR code to view independent test reports from Eurofins, NorConsult, the Danish Technological Institute and University Hospital Oslo.



For additional information
please email contact@rensair.com